

The logo for cabco, featuring the word "cabco" in a bold, dark blue sans-serif font. The letter "o" is stylized with a small orange dot above it and a small green dot to its right. The background of the entire page is a close-up photograph of a white computer keyboard, with the "return" key visible at the top and the "backup" key in the center. The lighting is soft and even, highlighting the texture of the keyboard keys.

cabco

DATA AND SERVER PROTECTION SOLUTIONS

backup

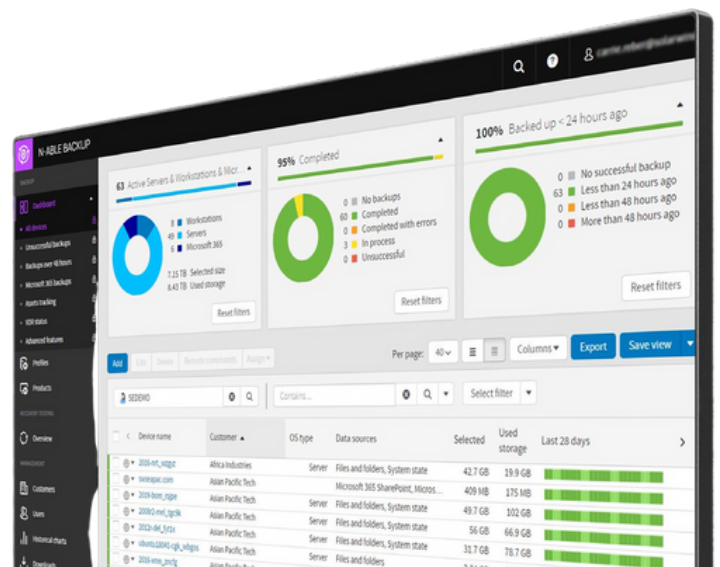
Cloud first data protection as a service

Cabco's data protection provides streamlined, cloud-first backup, disaster recovery, and archiving for physical and virtual servers, workstations, and Microsoft 365®* data, managed from a single web-based dashboard. We've partnered with **Cove Data Protection** and **N-ABLE** bring you a solution that reduces the cost and complexity of data protection—without sacrificing speed or reliability.



Flexible disaster recovery options

- Get multiple recovery options from a single product while enjoying the administrative ease of Cove's cloud-first SaaS architecture.
- Leverage fast file- and folder-level recovery and full system recovery with bare-metal restore or virtual disaster recovery.
- Create and manage standby images for better RTOs.
- Recover at LAN speed via the LocalSpeedVault option if needed.
- Test and verify backup recoverability on an automated schedule with recovery testing.



Built for the cloud

- Backing up to the cloud isn't an afterthought with Cove—it was built for that. Our proprietary architecture moves up to 60 times less data than traditional image backup products.
- Cove's TrueDelta deduplication and efficient architecture make daily backups small and lightweight, allowing you to back up more often.
- Cloud storage (including archiving) is included in your price, and you can keep backup data in region with 30 data centers worldwide.
- AES 256-bit encryption protects backup files in transit and at rest.



No hardware hassles

- Cove is a SaaS application—no need to patch, upgrade, or maintain a local application server.
- Appliance-free, direct-to-cloud backups help save you time and money.
- No need to buy, provision, or manage local data storage for your backups. Storage in our private cloud is included.
- Keep an optional local copy of your data using an existing network share or other hardware with LocalSpeedVault.

Efficiency and ease of use

- Simplify backup management and spend less time on routine tasks.
- Manage server, workstation, and Microsoft 365* backups and recoveries for multiple locations or customers from a single dashboard.
- Automate backup deployment with device profiles to help provide consistent configurations.
- Manage by exception with customizable views and reporting.



Features at a glance

End-to-end security

- AES 256-bit encryption is used to help secure files that remain encrypted in transit and at rest.
- Create your own private key or have one generated for you during deployment.
- ISO-certified data centers are located worldwide, with additional certifications by location.
- Role-level access lets you grant limited access to backups as needed, secured with mandatory two-factor authentication.

TrueDelta technology

- Back up only what you need by ignoring temporary or transient data, browser caches, and similar items. Cove's incremental backups move up to 60x less data than with image backup products.
- Process backup jobs efficiently with Cove's unique architecture, only sub-block-level data that has actually changed is processed. No need for the inefficiencies of full disk scanning and false positive changes introduced by defrag and file moves.
- Move data efficiently with a dramatically lower change rate than image backup tools. No need for resource-intensive block-level deduplication.
- WAN optimization further minimizes bandwidth usage; bandwidth throttling is available during business hours for slow network connections.



Microsoft 365 data protection* (standalone and integrated into N-central)


- Recovery of deleted items helps you keep control of your customers' data in Microsoft 365.
- Manage Microsoft 365 backups from the same dashboard as server and workstation backups.
- Seven years' data retention to help your customers meet regulatory requirements.
- Storage in our global private cloud is included. *Fair-use policies apply.*

** Cove Data Protection for Microsoft 365 includes Exchange™, OneDrive®, and SharePoint data.*

CONTACT US FOR PRICING




Interested in learning more? Give us a call! Let us how backing up to the cloud isn't no longer than afterthought with Cabco.

 1-800-675-4025

 Sales@cabco.ca

 <https://www.cabco.ca/>

 200 - 2 Ralston Avenue,
Dartmouth, NS B3B 1H7

65 King St,
Moncton, NB E1C 0A3

711 Woodstock Rd,
Fredericton, NB E3B 5N8

